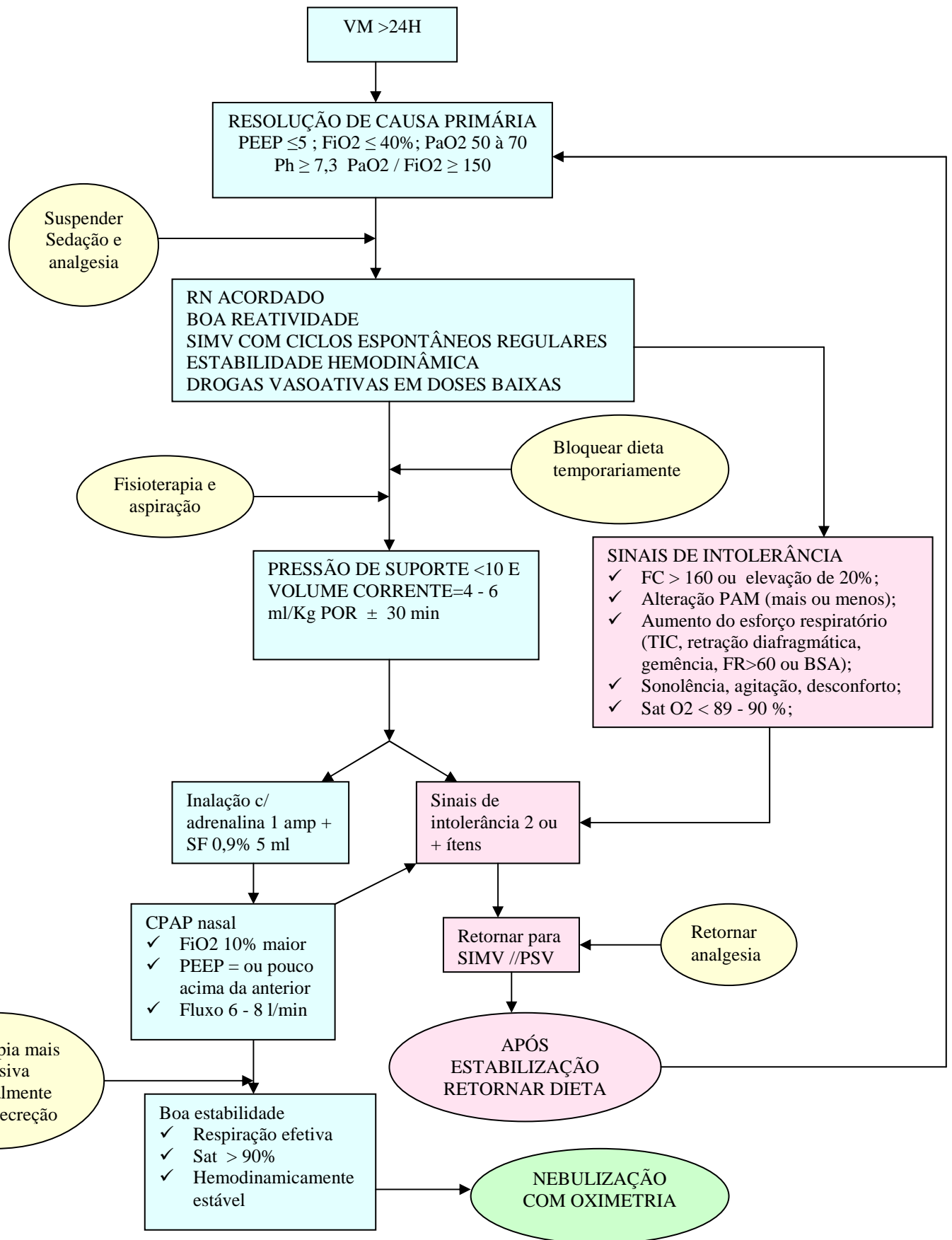


ALGORITMO PARA DESMAME DE VM NO PERÍODO NEONATAL



1. Cook DJ, Walter SD, Cook RJ, et al. *Incidence of and risk factors for ventilator-associated pneumonia in critically ill patients.* Ann Intern Med 1998; 129: 433-439. 2. Ely EW, Baker AM, Evans GW, et al. *The cost of respiratory care in mechanically ventilated patients with chronic obstructive pulmonary disease.* Crit Care Med 2000; 28: 408-413. 3. Epstein SK, Ciubotaru RL, Wong JB. *Effect of failed extubation on the outcome of mechanical ventilation.* Chest 1997; 112: 186-192. 4. Epstein, SK, Ciubotaru RL. *Independent effects of etiology of failure and time to reintubation on outcome for patients failing extubation.* Am J Respir Crit Care Med 1998; 158:489-493. 5. Restrepo RD, Fortenberry JD, Spainhour, C, et al. *Protocol-driven ventilator management in children: Comparison to nonprotocol care.* J Intensive Care Med 2004; 19: 274-284. 6. Reyes ZC, Claire N, Tauscher MK, et al. *Randomized controlled trial comparing synchronized intermittent mandatory ventilation and synchronized intermittent mandatory ventilation plus pressure support in preterm infants.* Pediatrics 2006; 118: 1409-1417. 7. Fontela PS, Piva JP, Garcia PC, et al. *Risk factors for extubation failure in mechanically ventilated pediatric patients.* Pediatr Crit Care Med 2005; 6: 166-170.